

Name:

Dato:

Process: Airless
Part: ASTM Panel
Project: ASTM Panel Easy
Instr: VRSim
Mil Target: 13.7
Coats: 2
Primer: 0
Color: 1
Clear: 1

Project Score

Actual / Possible
66.8 / 100

Transfer Efficiency

Actual / Possible
82.7 / 100

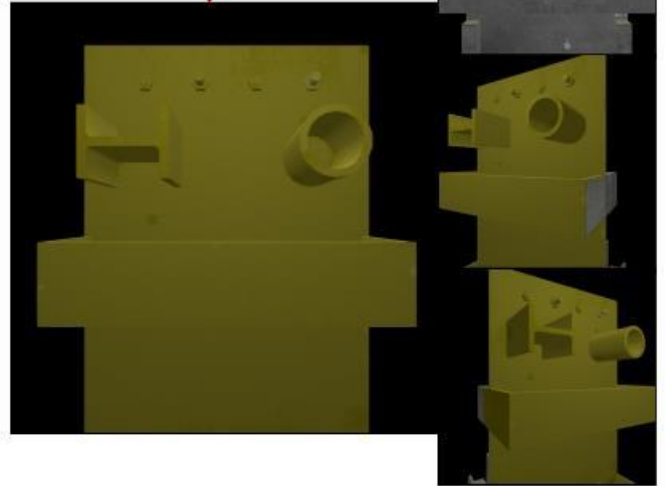
Coat Score

Coat 1	62.7 / 100
Coat 2	65.4 / 100

Her får du en rask og god oversikt over resultat med teknisk beskrivelse av prosjektet du har utført.

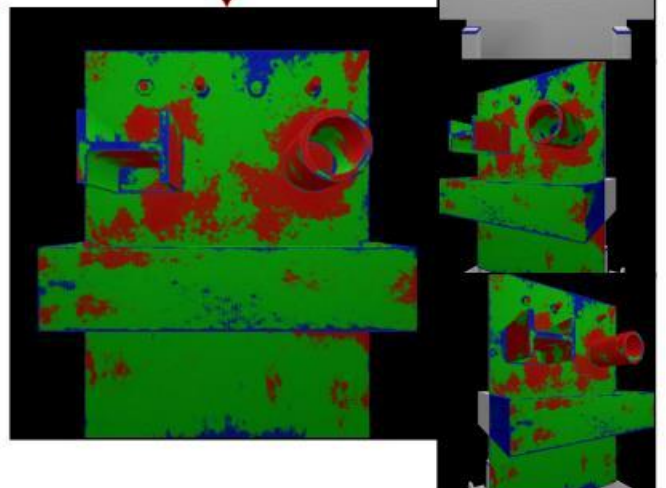
Overall

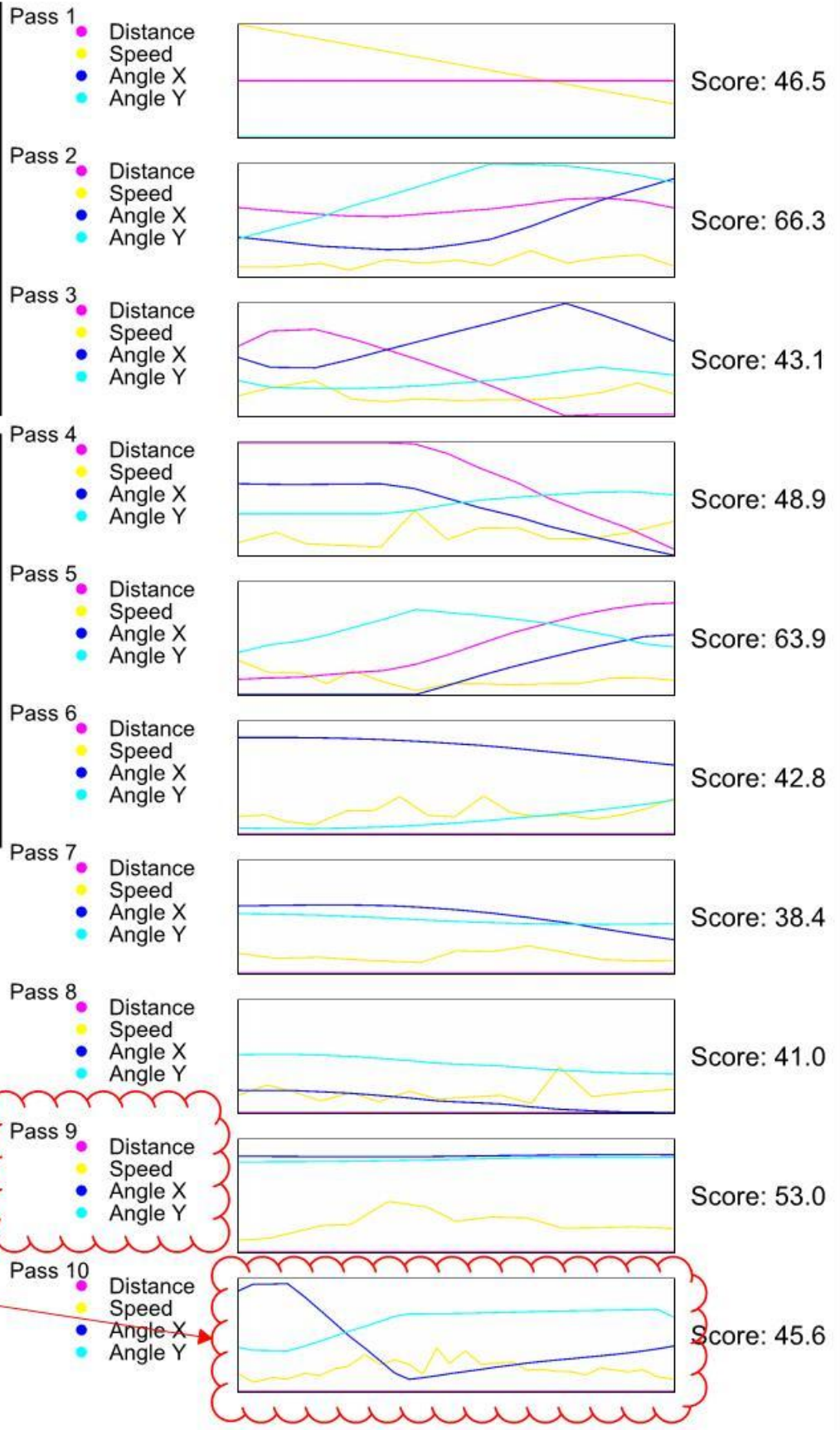
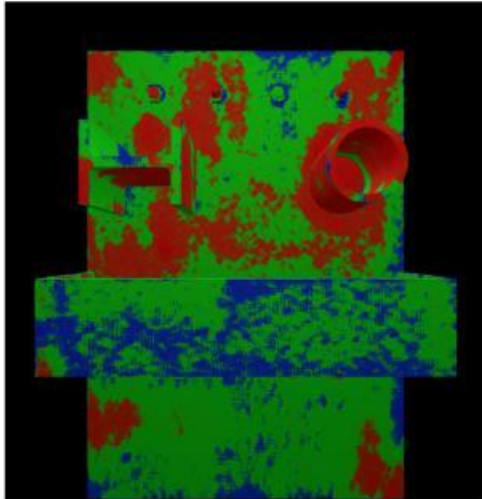
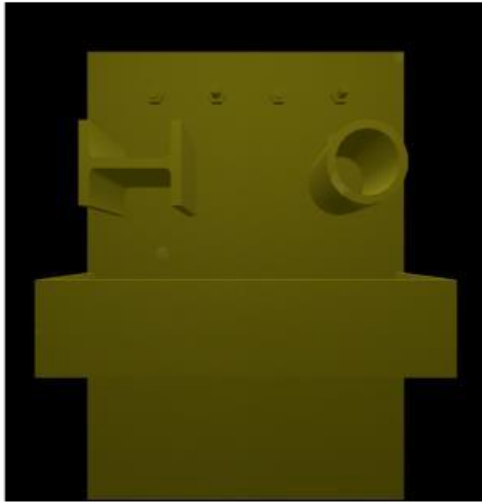
Her vises objektet før og etter



Coverage Map

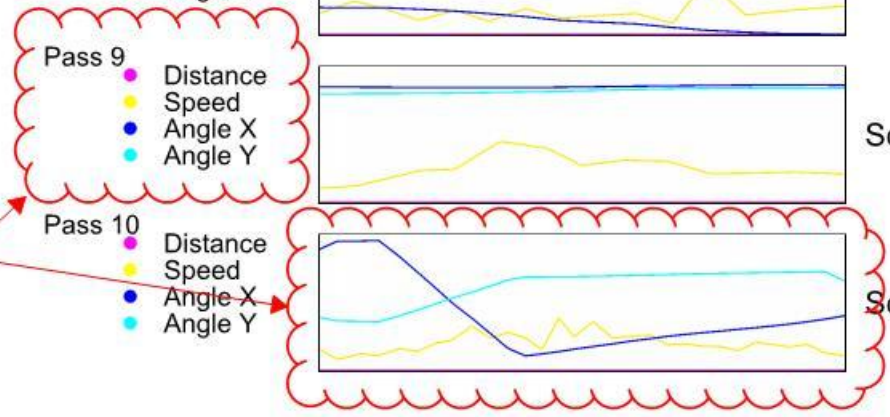
Her kan du se i dybden filmtykkelsen du har påført på objektet.





Vedlegget som følger med rapporten viser en detaljert oversikt over utførelsen din ved hjelp av grafer.

Den måler avstanden fra objektet du har påført, hastighet og vinkel på sprøyte bilde og håndbevegelsen.



Coat 2 Clear

Score: 65.4/100

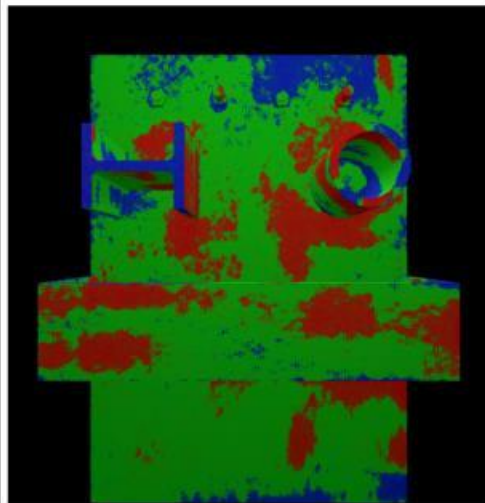
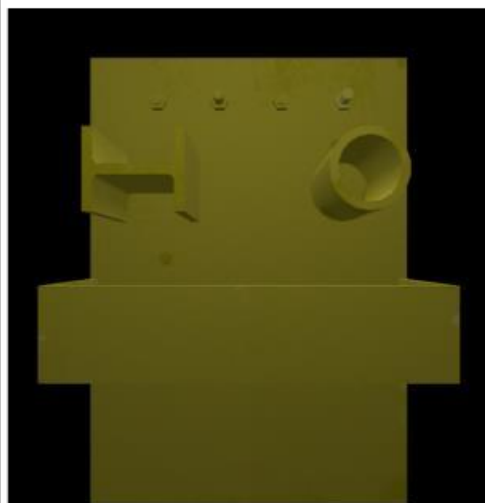
Settings

Air Pressure: N/A

Tip Size: 517

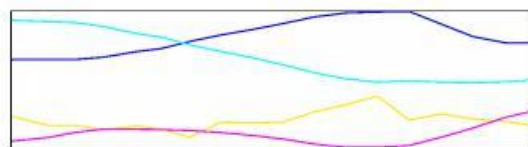
Fluid Pressure: 11871 kPa

Cup Config: Pressure



Pass 1

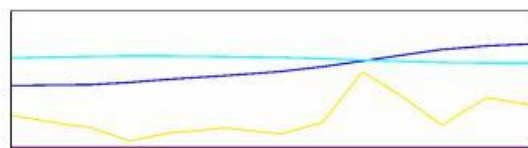
- Distance
- Speed
- Angle X
- Angle Y



Score: 57.8

Pass 2

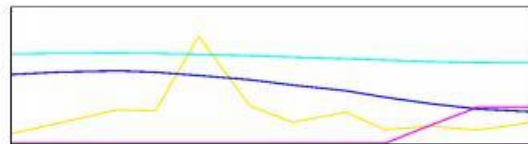
- Distance
- Speed
- Angle X
- Angle Y



Score: 45.8

Pass 3

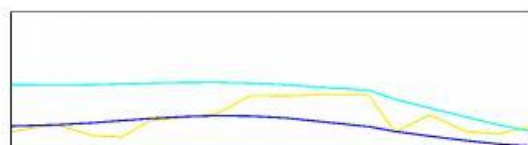
- Distance
- Speed
- Angle X
- Angle Y



Score: 42.0

Pass 4

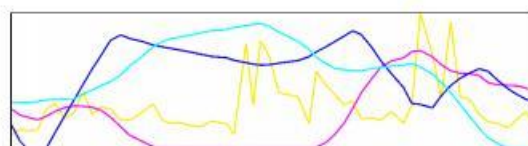
- Distance
- Speed
- Angle X
- Angle Y



Score: 46.7

Pass 5

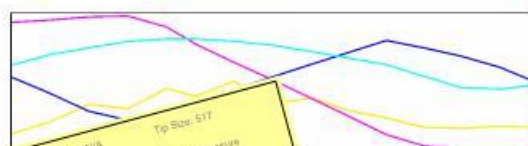
- Distance
- Speed
- Angle X
- Angle Y



Score: 70.6

Pass 6

- Distance
- Speed
- Angle X
- Angle Y



Score: 57.2

Pass 7

- Distance
- Speed
- Angle X
- Angle Y



Score: 72.8

Pass 8

- Distance
- Speed
- Angle X
- Angle Y



Score: 57.8

Pass 9

- Distance
- Speed
- Angle X
- Angle Y



Score: 71.8

Pass 10

- Distance
- Speed
- Angle X
- Angle Y



Score: 84.8

Pass 11

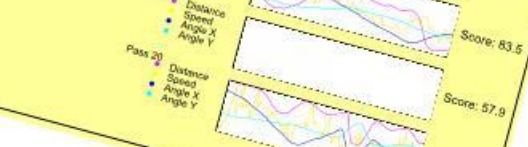
- Distance
- Speed
- Angle X
- Angle Y



Score: 77.8

Pass 12

- Distance
- Speed
- Angle X
- Angle Y



Score: 87.4

Pass 13

- Distance
- Speed
- Angle X
- Angle Y



Score: 54.6

Pass 14

- Distance
- Speed
- Angle X
- Angle Y

Score: 52.3

Pass 15

- Distance
- Speed
- Angle X
- Angle Y

Score: 44.4

Pass 16

- Distance
- Speed
- Angle X
- Angle Y

Score: 83.5

Pass 17

- Distance
- Speed
- Angle X
- Angle Y

Score: 57.9

Pass 18

- Distance
- Speed
- Angle X
- Angle Y

Score: 73.4

Pass 19

- Distance
- Speed
- Angle X
- Angle Y

Score: 71.8

Pass 20

- Distance
- Speed
- Angle X
- Angle Y

Score: 62.3

Pass 21

- Distance
- Speed
- Angle X
- Angle Y

Score: 77.8

Pass 22

- Distance
- Speed
- Angle X
- Angle Y

Score: 80.1

Pass 23

- Distance
- Speed
- Angle X
- Angle Y

Score: 57.8

Pass 24

- Distance
- Speed
- Angle X
- Angle Y

Score: 71.8

Pass 25

- Distance
- Speed
- Angle X
- Angle Y

Score: 62.3

Pass 26

- Distance
- Speed
- Angle X
- Angle Y

Score: 87.4

Pass 27

- Distance
- Speed
- Angle X
- Angle Y

Score: 54.6

Pass 28

- Distance
- Speed
- Angle X
- Angle Y

Score: 52.3

Pass 29

- Distance
- Speed
- Angle X
- Angle Y

Score: 44.4

Pass 30

- Distance
- Speed
- Angle X
- Angle Y

Score: 83.5

Pass 31

- Distance
- Speed
- Angle X
- Angle Y

Score: 57.9

Pass 32

- Distance
- Speed
- Angle X
- Angle Y

Score: 73.4

Pass 33

- Distance
- Speed
- Angle X
- Angle Y

Score: 71.8

Pass 34

- Distance
- Speed
- Angle X
- Angle Y

Score: 62.3

Pass 35

- Distance
- Speed
- Angle X
- Angle Y

Score: 87.4

Pass 36

- Distance
- Speed
- Angle X
- Angle Y

Score: 54.6

Pass 37

- Distance
- Speed
- Angle X
- Angle Y

Score: 52.3

Pass 38

- Distance
- Speed
- Angle X
- Angle Y

Score: 44.4

Pass 39

- Distance
- Speed
- Angle X
- Angle Y

Score: 83.5

Pass 40

- Distance
- Speed
- Angle X
- Angle Y

Score: 57.9

Pass 41

- Distance
- Speed
- Angle X
- Angle Y

Score: 73.4

Pass 42

- Distance
- Speed
- Angle X
- Angle Y

Score: 71.8

Pass 43

- Distance
- Speed
- Angle X
- Angle Y

Score: 62.3

Pass 44

- Distance
- Speed
- Angle X
- Angle Y

